



**Super Hanger™** has a corrosion and maintenance-free design that supports plumbing and conduit pipes in a variety of applications from parking garage ceilings to trenched utilities below concrete structures.



## KEY FEATURES

**Effective for a broad range of applications** including plumbing, HVAC, fire sprinkler systems, and other industrial applications.

**Easy to install** with lightweight PVC hanger material and fiberglass threaded rods and nuts.

**Maintenance-free design** is constructed from nonmetallic materials that prevent corrosion and rusting.

**Modular system** accommodates up to 650-pound loads and up to 10-inch pipe diameters.

**Protect your next plumbing or conduit project from damage.**

Contact us today for immediate assistance.

**888.704.VOID (8643)**  
**connect@voidform.com**

voidform.com

## Product Options



### Super Hanger™ PVC Pipe Hangers

PART NUMBER	PIPE SIZE	HANGER SIZE	ROD DIMENSION	DESIGN LOAD*
SH002VFA	2 in	5 in	1/2 in	450 lbs
SH003VFA	3 in	6 in	1/2 in	450 lbs
SH004VFA	4 in	8 in	1/2 in	650 lbs
SH006VF	6 in	10 in	1/2 in	650 lbs
SH008VF	8 in	12 in	5/8 in	650 lbs
SH010VF	10 in	14 in	5/8 in	650 lbs

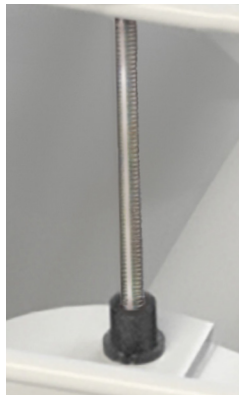


\* Design loads are based on minimum ultimate hanger failure safety ratio of 3:1.

**Spacing:** Hanger spacing is typically 4-ft on center but may vary per code. (Please advise if spacing is not standard).

### Super Rod™ Fiberglass Threaded Rods

PART NUMBER	ROD SIZE	SHEAR STRENGTH*
TR500VF	1/2 in x 8 ft	2,200 lbs
TR625VF	5/8 in x 8 ft	3,100 lbs
TR750VF	3/4 in x 8 ft	4,500 lbs
TR1000VF	1 in x 8 ft	6,500 lbs



Super Hangers work in a broad range of applications to suspend utility lines away from the damaging effects of corrosion and expansive soils.

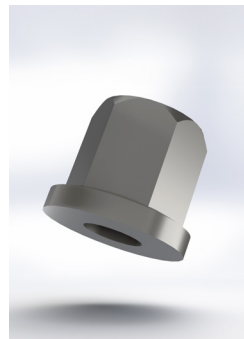
Learn more at [voidform.com](http://voidform.com)

\* Shear strength is based on testing the fiberglass rod with the flange nut.

### Super Nut™ Hex Flange Nuts

Made from a vinylester resin

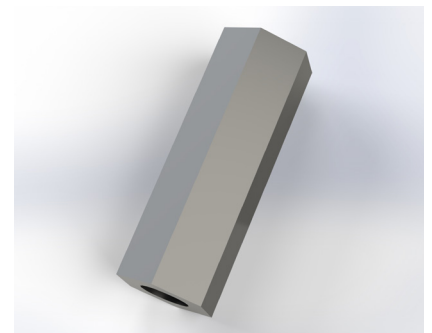
PART NUMBER	NUT SIZE
FN500VF	1/2 in
FN625VF	5/8 in
FN750VF	3/4 in



### Threaded Rod Couplers

Made from Isoplast™ a glass reinforced polyurethane

PART NUMBER	COUPLER SIZE
RC500VF	1/2 in
RC625VF	5/8 in
RC750VF	3/4 in



Have Questions? 888.704.VOID (8643) • [connect@voidform.com](mailto:connect@voidform.com) • [voidform.com](http://voidform.com)