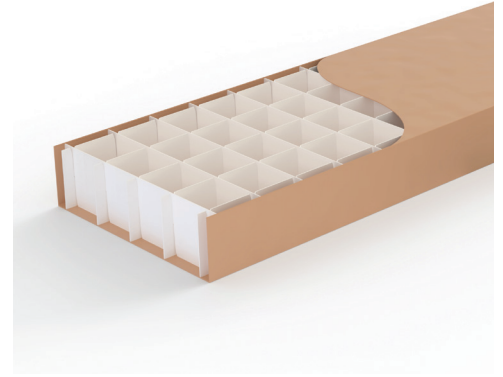
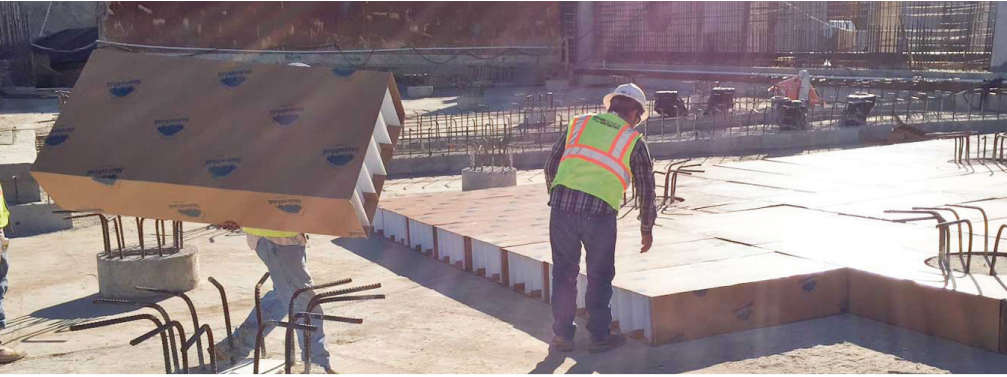


# VoidForm

## StormVoid® (Slab)

**StormVoid® (Slab)** creates a void space under structural slabs, allowing soil to expand without causing damage.



### DESCRIPTION

StormVoid (Slab) temporarily supports freshly poured concrete while creating a permanent void space underneath, allowing soil to expand without causing damage to the structure above.

The StormVoid product line is ideal for use in wet soil conditions or inclement weather.

The interior is comprised of waterproof, fluted copolymer polypropylene (PPC) components designed to flex as additional loads from heaving soils are imposed. The exterior cover is made from moisture-resistant corrugated paper and will degrade through the gradual absorption of moisture, allowing expansive soil to migrate into the cellular network.

The StormVoid (Slab) forms are pre-manufactured for optimal product performance, however they may be cut to fit non-modular areas, if required.

### INSTALLATION

1. Keep StormVoid dry prior to concrete placement.
2. Prepare grade to an even, smooth surface.
3. Ensure interior cells remain in their proper orientation to maintain structural integrity.
4. Install StormVoid (Pier) at piers where required.
5. Place StormVoid (Slab) pieces starting at the perimeter of the slab area.
6. Crosscut pieces with razor knife or handsaw to fit into non-modular areas.
7. Place StormCover Sheet™ over entire top surface to span small gaps and to protect the void forms against punctures and pinpoint loads.
8. Insert End Caps on open pieces that will be exposed to concrete.
9. Install steel and place concrete.

### ACCEPTABLE MANUFACTURER

VoidForm Products, LLC · 888.704.VOID (8643) · sales@voidform.com · voidform.com

### DIMENSIONS

**Height:** 4" to 12"

**Width:** 6" to 30"

**Length:** 60"

### MATERIAL

**Cover:** Moisture resistant exterior paper sheet, overlapped or tucked and secured with staples

**Interior:** Waterproof, copolymer polypropylene (PPC)

### STRENGTH

To be placed under structural slabs, typically 6" to 60" thick



**CUSTOM SIZES AND  
STRENGTHS AVAILABLE**