



StormVoid® (DropPanel)

StormVoid® (DropPanel) creates a void space around the upper portion of the drilled piers, allowing soil to expand without causing damage.



DESCRIPTION

StormVoid (DropPanel) void forms temporarily supports freshly poured concrete and creates a void space around the upper portion of drilled piers supporting thickened slabs, allowing soil to expand without causing damage to the structure above.

The StormVoid product line is ideal for use in wet soil conditions during inclement weather.

The interior is comprised of waterproof, fluted copolymer polypropylene (PPC) components designed to flex as additional loads from heaving soils are imposed. The exterior cover is made from moisture-resistant corrugated paper and will degrade through the gradual absorption of moisture, allowing expansive soil to migrate into the cellular network.

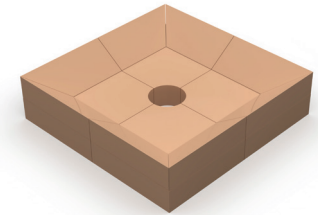
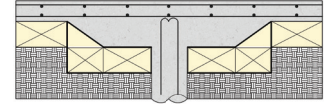
The StormVoid (DropPanel) products are pre-manufactured and sealed to conform to pier diameters, without requiring on-site cutting. The hole can be positioned on center or offset depending upon the application.

INSTALLATION

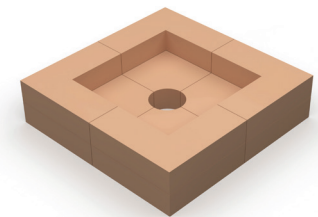
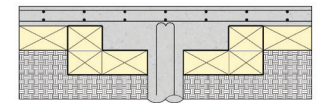
1. Keep StormVoid dry prior to concrete placement to ensure structural integrity is maintained and interior cells remain vertical.
2. Prepare grade to an even, smooth surface.
3. Place StormVoid (DropPanel) pieces around piers.
4. Install StormVoid (Slab) pieces starting at the perimeter of the slab area.
5. Place StormCover™ Sheet over entire surface to span small gaps and to protect the void forms against punctures.
6. Install steel and place concrete.

ACCEPTABLE MANUFACTURER

DROPPANEL TPR™



DROPPANEL VRT™



DIMENSIONS

Height: 8" to 24" (with curb)

Width: 24" to 72"

Length: 24" to 72"

MATERIAL

Cover: Corrugated paper with a moisture-resistant outer surface

Interior: Waterproof, fluted copolymer polypropylene (PPC)

STRENGTH

Working load as recommended for concrete thickness, typically 10" to 64"



CUSTOM SIZES AND
STRENGTHS AVAILABLE

VoidForm Products, LLC · 888.704.VOID (8643) · sales@voidform.com · voidform.com